

Hubert Grove, Clapham North, SW9

1 bedroom flat to let

£403 Per Week

Furnished

Property Details

This spacious and bright one bedroom Victorian flat is located just around a seven minute walk from the Northern Line at Clapham North and around a fifteen minute walk to the Victoria Line at Brixton. This flat is flooded with natural light being three skylights in the stunning open plan reception area/kitchen and large windows throughout. The bedroom is spacious and neutrally decorated and the bathroom is generously sized and contemporary. Being in between Clapham and Brixton you have an excellent choice of both local and chained bars, restaurants and shops in both Brixton and Clapham.

Features

- Victorian
- Light and airy
- Open plan kitchen/reception
- Around a 7 minute walk from Clapham north station
- Around a 15 minute walk to Brixton underground
- One bedroom

Council tax band C EPC rating C (69)



Hubert Grove, Clapham North, SW9

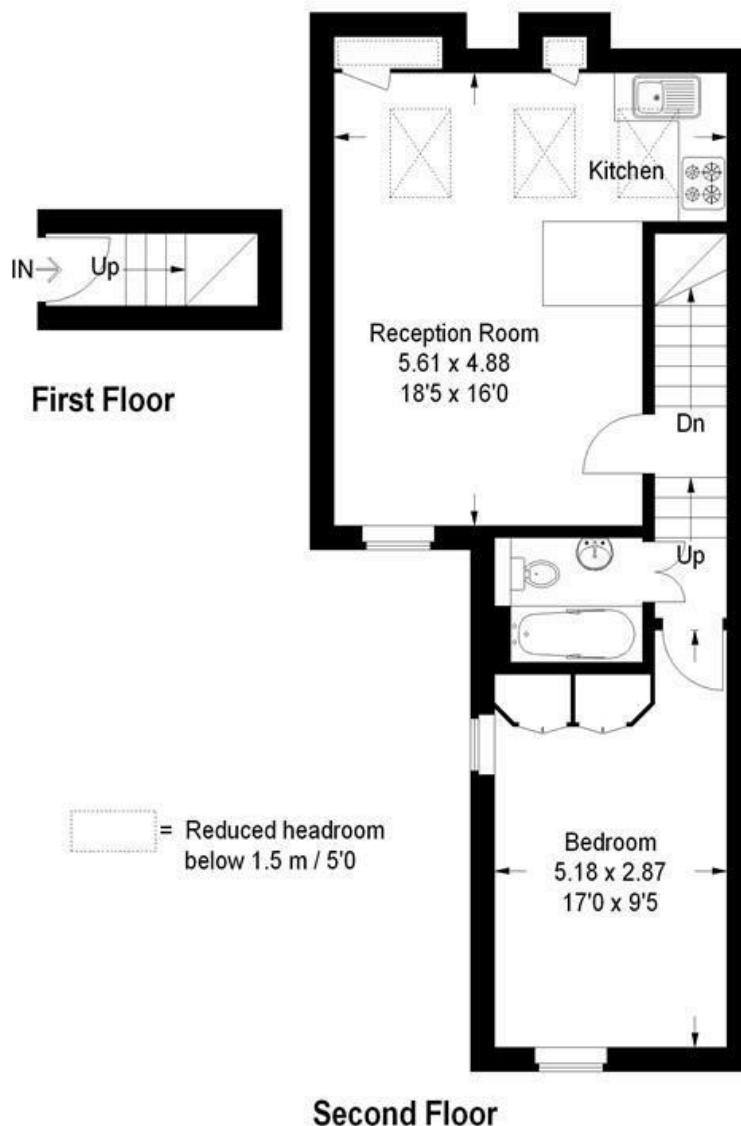
Hubert Grove, SW9

Approximate Gross Internal Area

First Floor = 2.4 sq m / 26 sq ft

Second Floor = 47.4 sq m / 510 sq ft

Total = 49.8 sq m / 536 sq ft



This plan is for layout guidance only. Not drawn to scale unless stated. Windows and door openings are approximate. Whilst every care is taken in the preparation of this plan, please check all dimensions, shapes and compass bearings before making any decisions reliant upon them. (ID179522)

Hubert Grove, Clapham North, SW9

